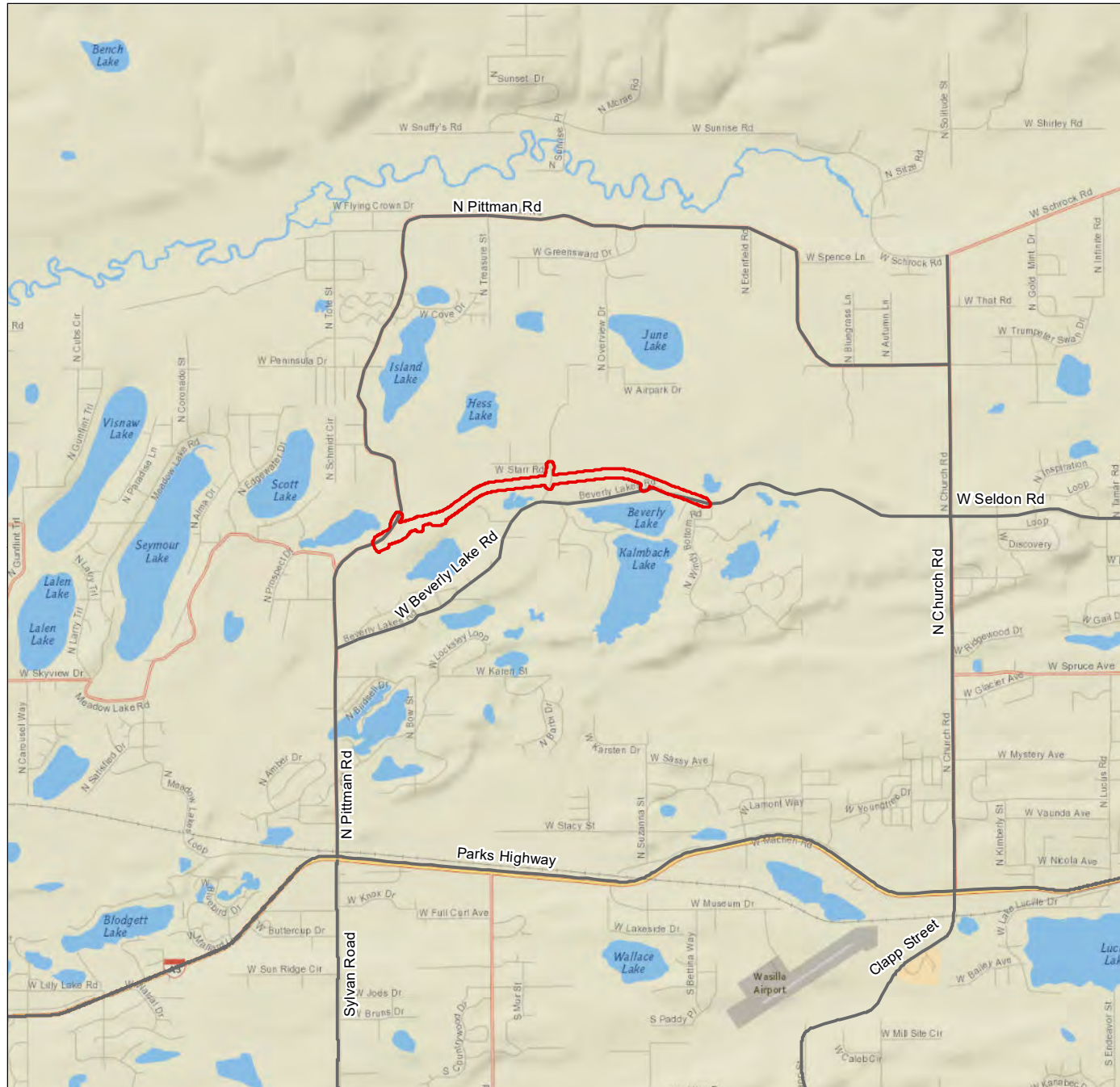


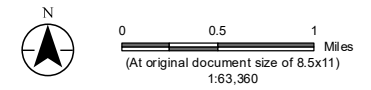
APPENDIX A

Figures

1. Location and Vicinity Map
2. Alignment Alternatives
3. Typical Section
4. Proposed Alignment
5. Wetlands and Waters Overview



Seldon Road Extension Phase II Proposed Project



Notes

1. Coordinate System: NAD 1983 StatePlane Alaska 4 FIPS 5004 Feet
2. Data Sources:
3. Background: Sources: Esri, HERE, Garmin, Intermap, increment P Corp., GEBCO, USGS, FAO, NPS, NRCAN, GeoBase, IGN, Kadaster NL, Ordnance Survey, Esri Japan, METI, Esri China (Hong Kong), (c) OpenStreetMap contributors, and the GIS User Community



Project 2047079800



**STATE OF ALASKA
DEPARTMENT OF TRANSPORTATION
& PUBLIC FACILITIES**

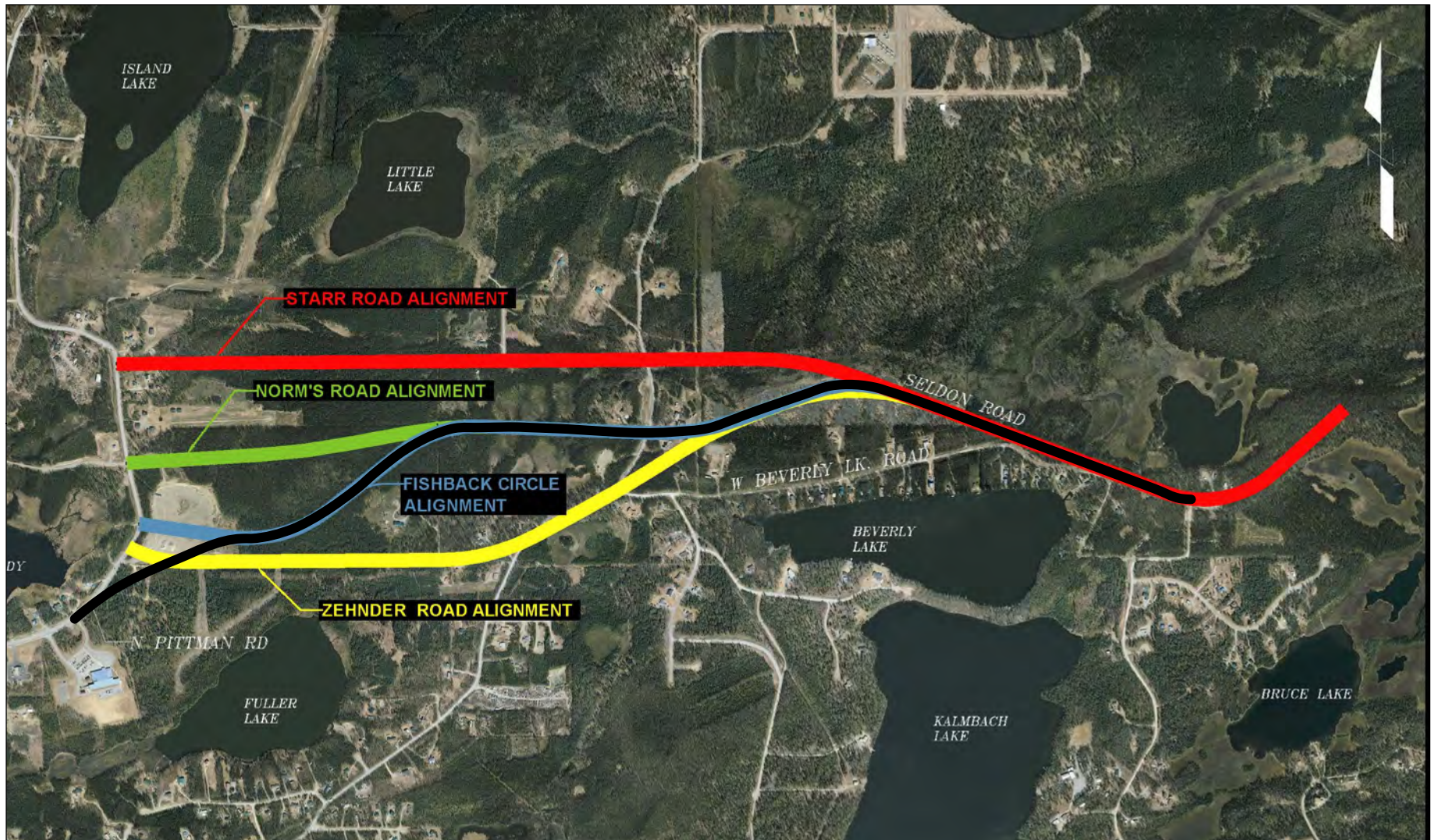
Figure No.

1

Title

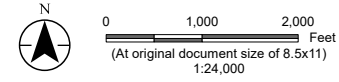
**Seldon Road Extension Phase II
Location & Vicinity Map**

U:\12047079800\gis\mxd\CAT-X\2047079800_Fig-02_CAT-X_Align_Als.mxd Revised: 2023-02-24 By: cparmone



PROPOSED ALIGNMENT*

*Alignments shown are a graphical representation of approximate location and route and are not representative of design accuracy.



Notes

1. Coordinate System: NAD 1983 StatePlane Alaska 4 FIPS 5004 Feet
2. Data Sources: Mat-Su Borough Cadastral Parcels Roads
3. Background: Sources: Esri, HERE, Garmin, Intermap, increment P Corp., GEBCO, USGS, FAO, NPS, NRCAN, Geobase, IGN, Kadaster NL, Ordnance Survey, Esri Japan, METI, Esri China (Hong Kong), (c) OpenStreetMap contributors, and the GIS User Community

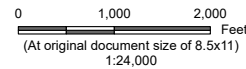
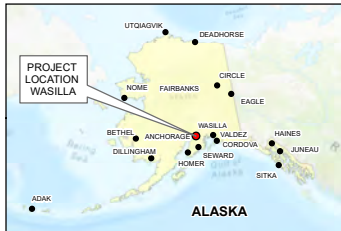
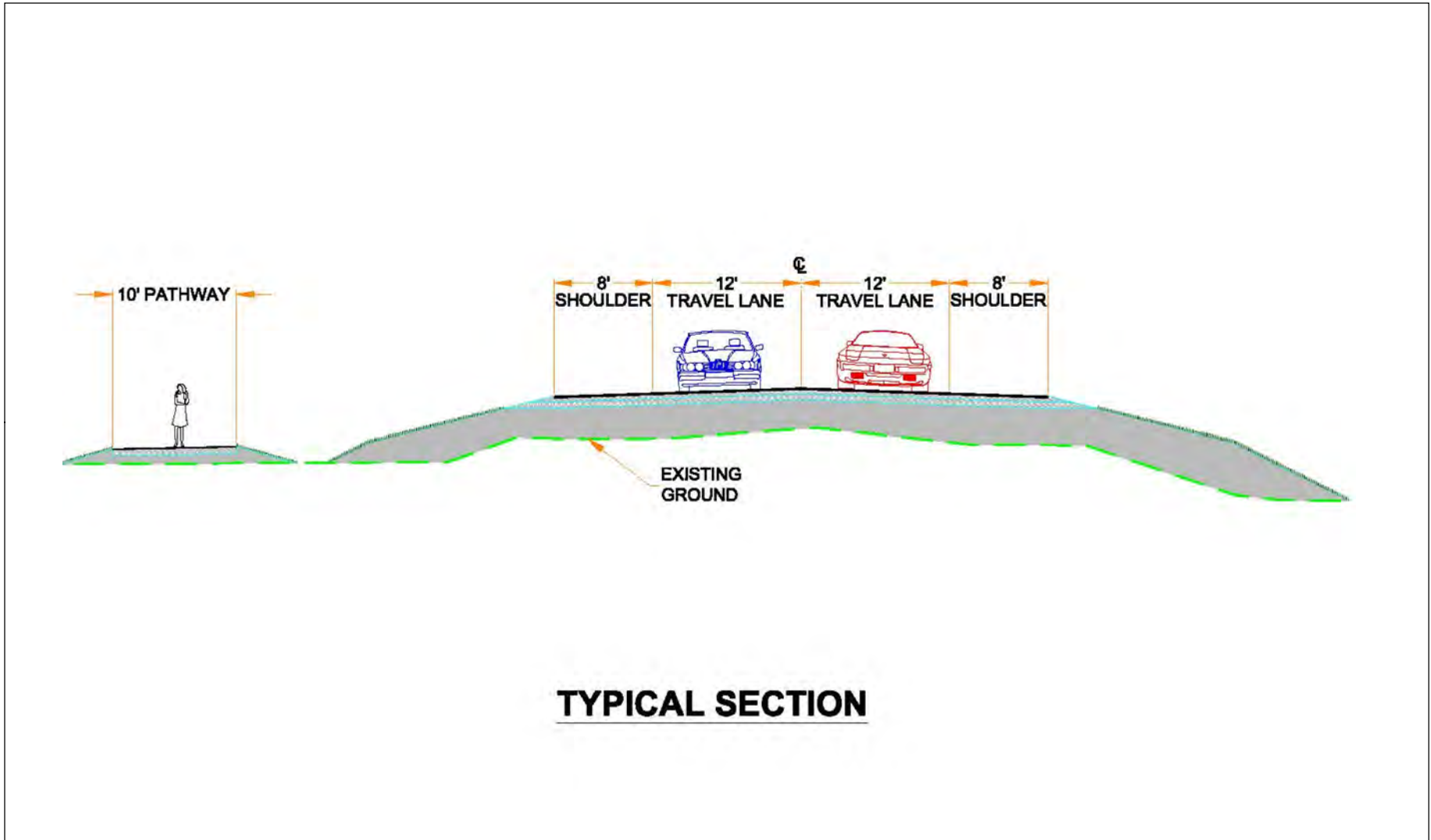
Project 2047079800

STATE OF ALASKA
DEPARTMENT OF TRANSPORTATION & PUBLIC FACILITIES

Figure No. **2**

Title
Seldon Road Extension Phase II Alignment Alternatives

Disclaimer: This document has been prepared based on information provided by others as cited in the Notes section. Stantec has not verified the accuracy and/or completeness of this information and shall not be responsible for any errors or omissions which may be incorporated herein as a result. Stantec assumes no responsibility for data supplied in electronic format, and the recipient accepts full responsibility for verifying the accuracy and completeness of the data.



Notes

1. Coordinate System: NAD 1983 StatePlane Alaska 4 FIPS 5004 Feet
2. Data Sources: Mat-Su Borough Cadastral Parcels Roads
3. Background: Sources: Esri, HERE, Garmin, Intermap, increment P Corp., GEBCO, USGS, FAO, NPS, NRCAN, GeoBase, IGN, Kadaster NL, Ordnance Survey, Esri Japan, METI, Esri China (Hong Kong), (c) OpenStreetMap contributors, and the GIS User Community

Project



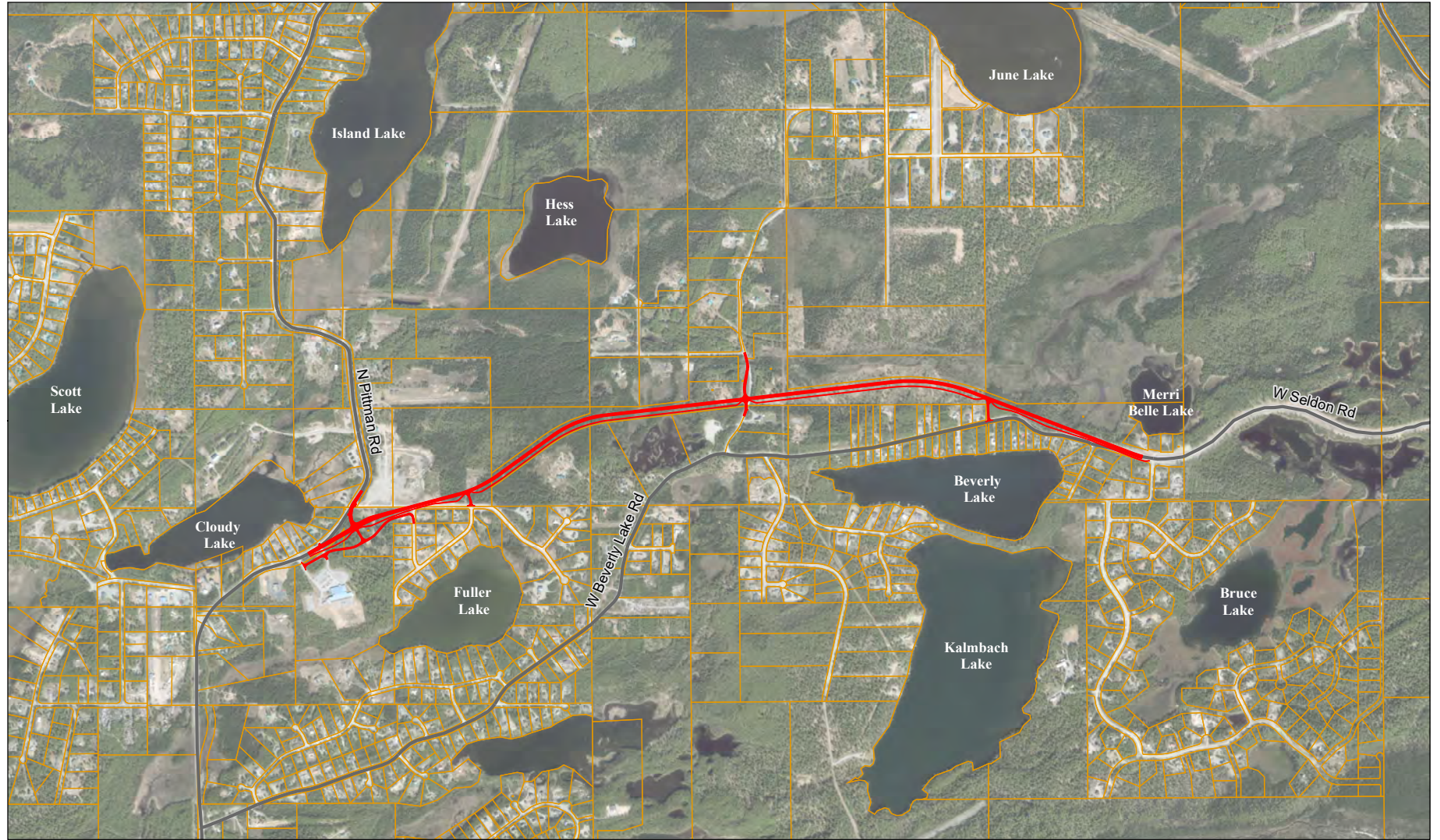
2047079800
STATE OF ALASKA
DEPARTMENT OF TRANSPORTATION
& PUBLIC FACILITIES

Figure No.

3

Title

Seldon Road Extension Phase II
Church Road to Pittman Road
Typical Section



PROPOSED ROAD AND PEDESTRIAN PATH
Parcel Lot Lines



0 1,000 2,000 Feet
 (At original document size of 8.5x11)
 1:24,000

Notes

1. Coordinate System: NAD 1983 StatePlane Alaska 4 FIPS 5004 Feet
2. Data Sources: Mat-Su Borough Cadastral Parcels Roads
3. Background: Sources: Esri, HERE, Garmin, Intermap, increment P Corp., GEBCO, USGS, FAO, NPS, NRCAN, Geobase, IGN, Kadaster NL, Ordnance Survey, Esri Japan, METI, Esri China (Hong Kong), (c) OpenStreetMap contributors, and the GIS User Community
 Source: Esri, Maxar, Earthstar Geographics, and the GIS User Community

Project



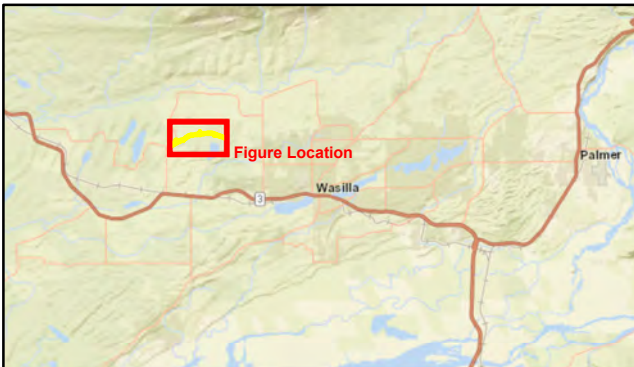
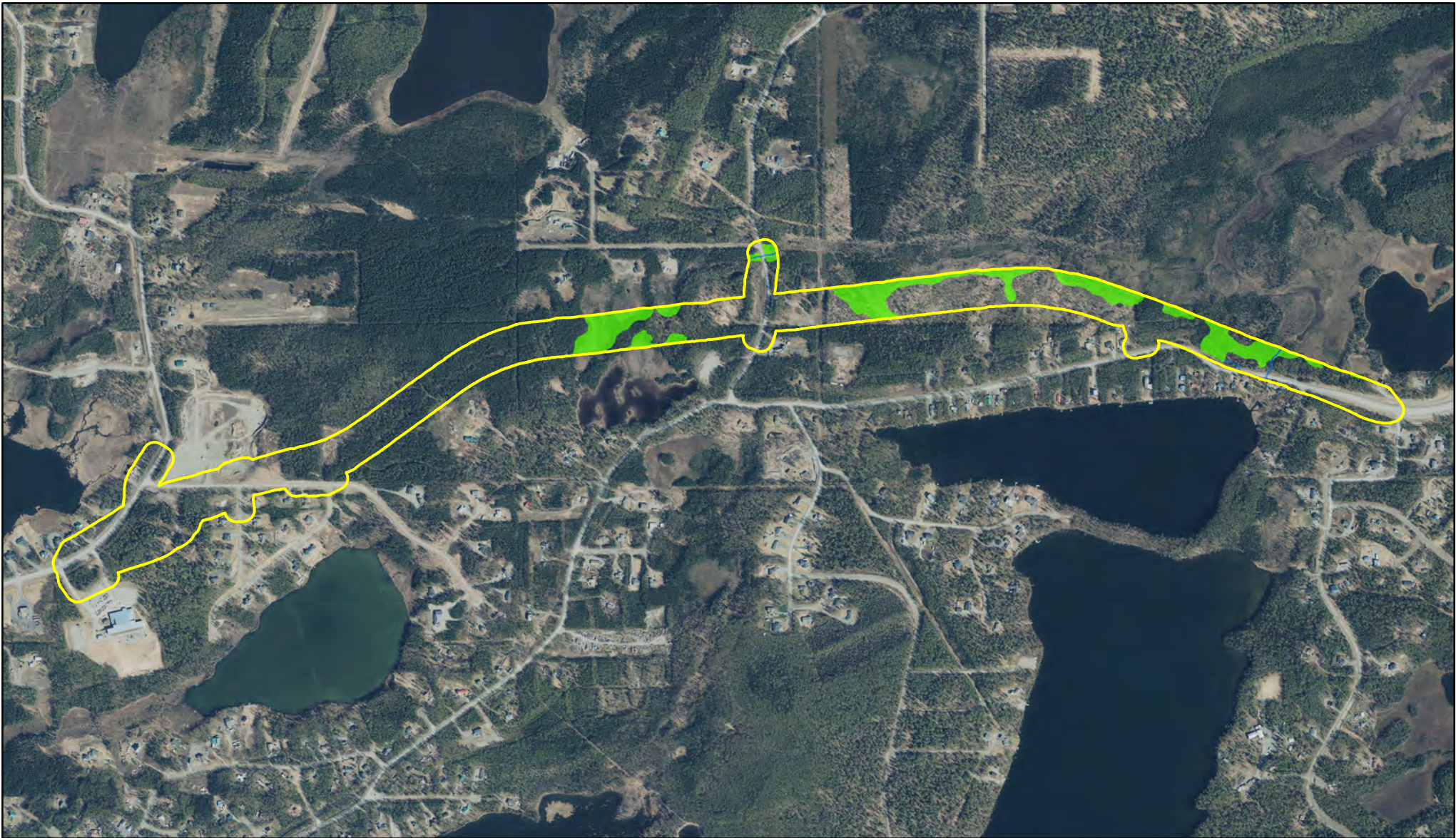
2047079800
STATE OF ALASKA
DEPARTMENT OF TRANSPORTATION
& PUBLIC FACILITIES

Figure No.

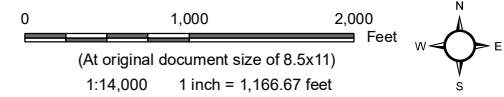
4

Title

Seldon Road Extension Phase II
Proposed Alignment



- Study Area
- Aquatic Resource Type**
- ~ Stream
- ~ Wetland



Client
 AK Dept. of Transportation & Public Facilities

Project
 Seldon Road Extension Phase II

Figure
Wetlands and Waters Overview

Figure Number
 5

